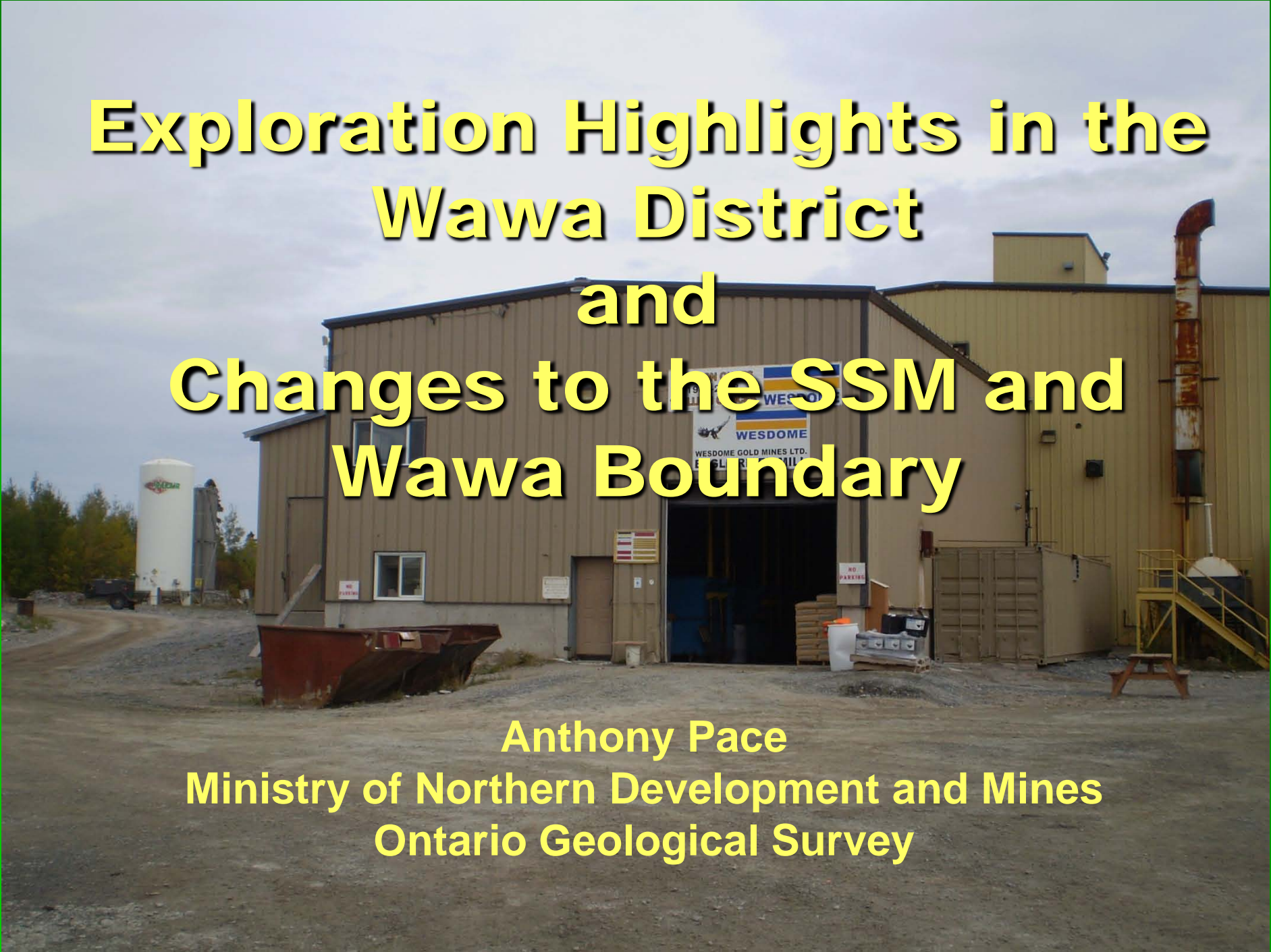


Exploration Highlights in the Wawa District and Changes to the SSM and Wawa Boundary

A photograph of a large, tan-colored industrial building with a dark roof. The building has a large open bay door in the center. Above the door is a sign that reads "WESDOME" and "WESDOME GOLD MINES LTD. ENGLISHTON MIL". To the left of the building is a white water tower. In the foreground, there is a red metal structure, possibly a conveyor or part of a machine. The ground is dirt and gravel. The sky is overcast.

Anthony Pace
Ministry of Northern Development and Mines
Ontario Geological Survey

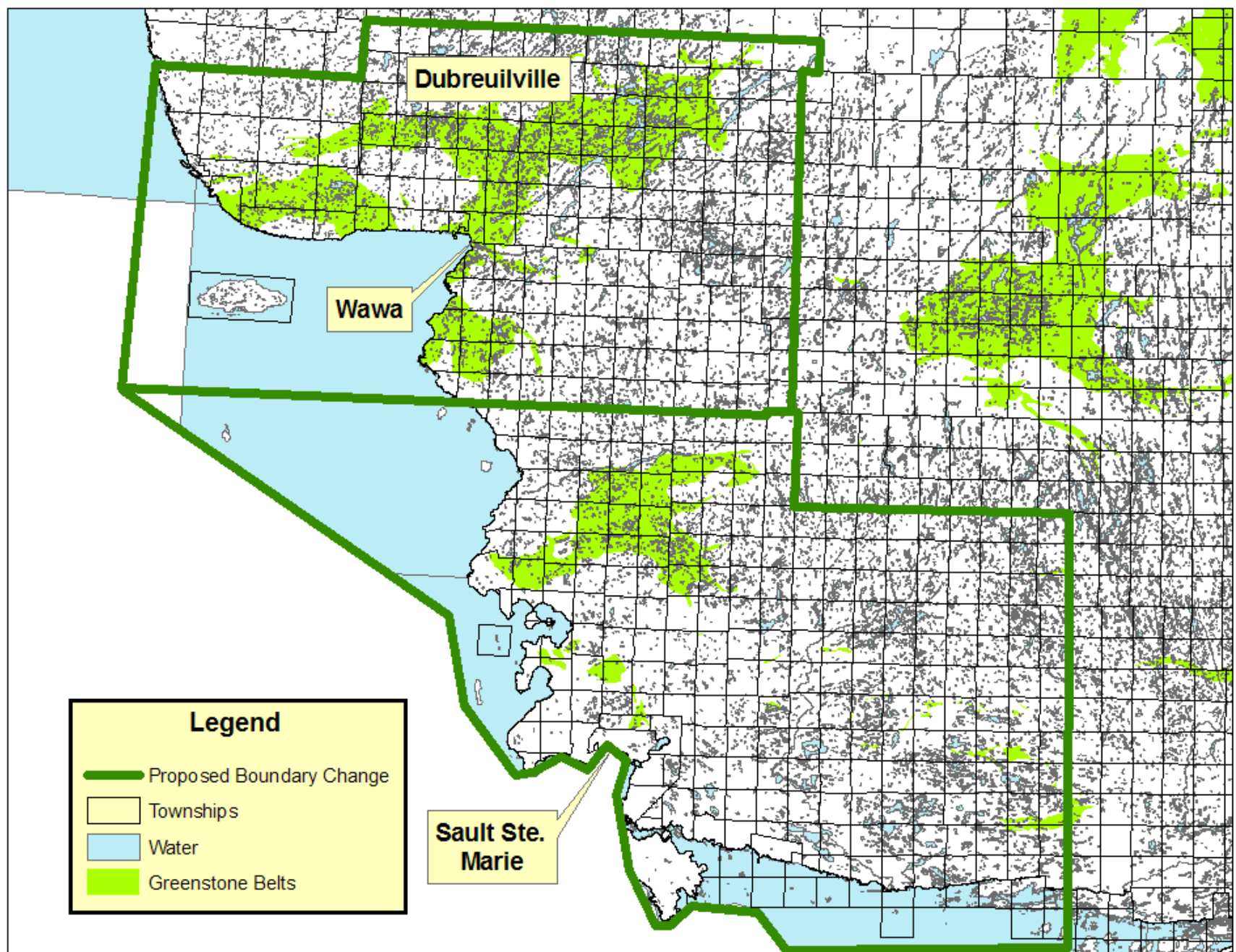
Dubreuilville

Wawa

Sault Ste.
Marie

Legend

- Proposed Boundary Change
- Townships
- Water
- Greenstone Belts



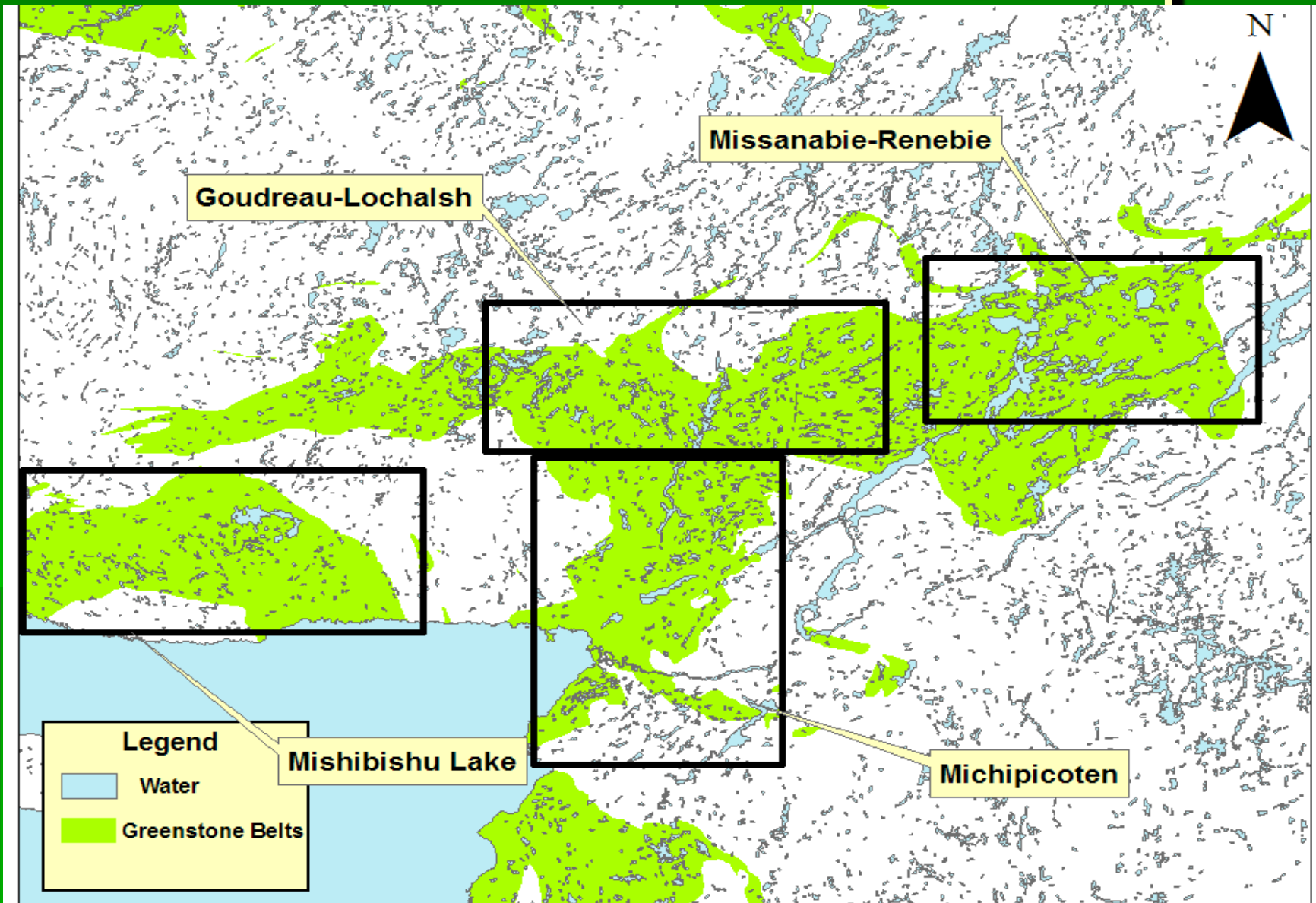
Effect of the Boundary Changes?

- Changes will incorporate 2 additional large scale greenstone belts.
- Monitoring of 2 producing gold mines along with the various exploration projects currently in affect
- 2 Additional First Nations
- Changes at the Provincial Recording Office (assessment work will now be delivered to the SSM office)
- Re-aligned with the Mineral Development and Lands Branch staff from the Sudbury office. This is in regards to advanced exploration and plans and permits under the new regulations from the Mining Act.
- Work closely with the Northern Development Advisor of the MNDM.
- Allows the RGP Staff in Sault Ste. Marie to work with the EDC of Wawa, the Town of Wawa, exploration companies, and the local SDPA regarding future mapping projects in the area.

Exploration Highlights in the Wawa District

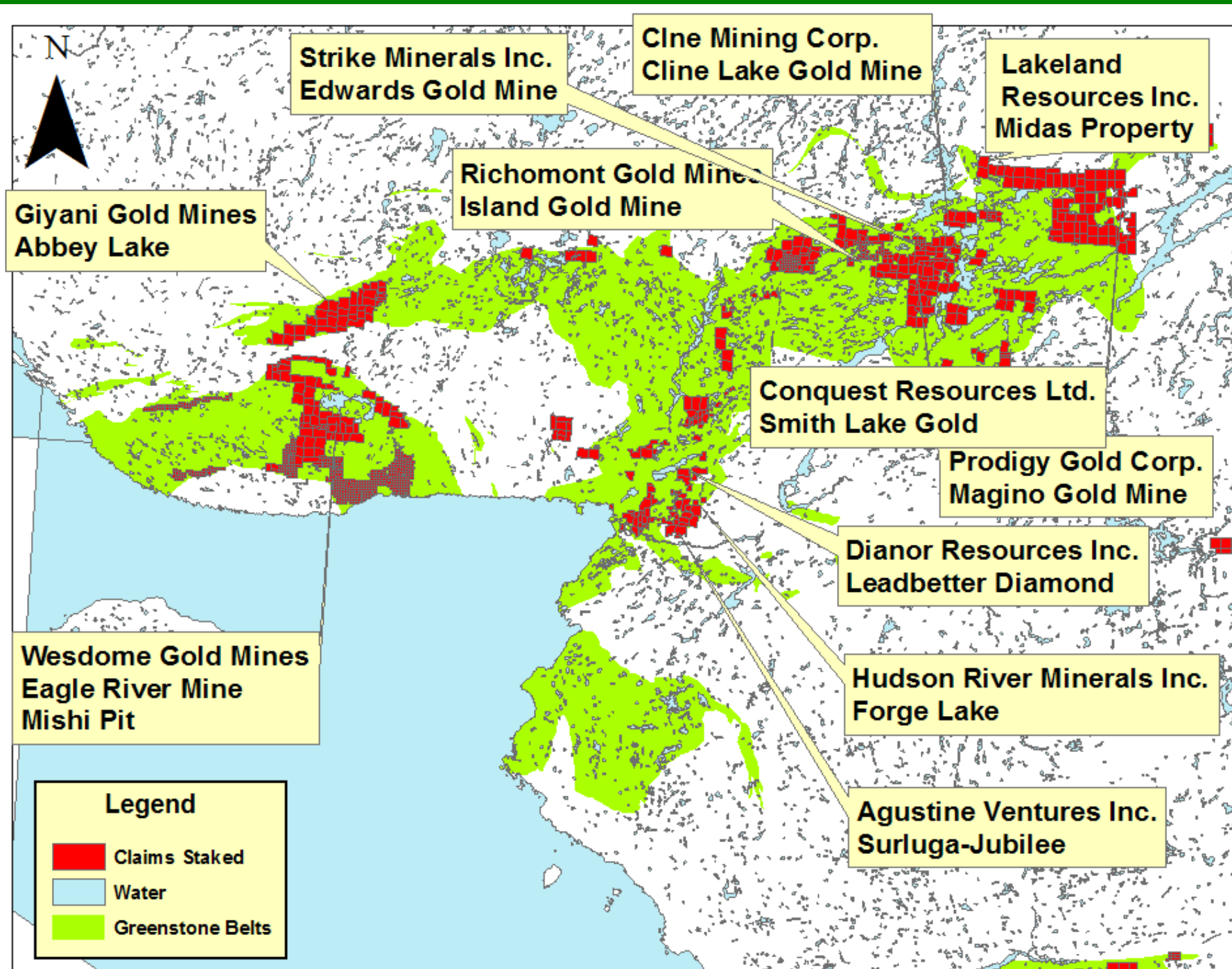


The Wawa Gold Camp



Total Historical Gold Production in the Wawa Area

- Historically there have been 21 gold mines operating in the Wawa Area.
- A table illustrating these past mines are documented in our annual Report of Activities.
- Total Production in ounces gold from these mines totalled 2,617,865 oz gold.
- Currently there are 2 producing gold mines in the Wawa Area:
 - Wesdome Gold Mines: Eagle River Mine and Mishi Pit:
 - From 1995-2010 the Eagle River Mine has produced 848,001 ounces of gold
 - Richmond Mines Ltd.: Island Gold Mine:
 - From 2006-2010 the Island Gold Mine has produced 160,101 ounces of gold.



Hudson River Minerals Inc.

- Has acquired 3 gold properties that include the Forge Lake, Hawk Junction and Otter Pond.
- Located 14 km south of the Richmond Mines Island Gold Mine
- The company has advanced on the Forge Lake property and has completed a 17 hole diamond drill program focusing on 2 known gold zones that form the Forge Lake Zone
- Underground workings were completed between 1920-1943 with a historical resources of 8,426 tons of Au mined at 0.27oz/ton.
- Gold mineralization hosted in quartz-vein shear zone type deposits.

Augustine Ventures Inc.

- The company has been exploring the Jubilee-Surluga Project in McMurray Township.
- Has completed an NI 43-101 resource estimate of 1,182, 000 ounces at 1.14g/t Au. The company has put together an exploration program designed to identify and target deeper vein deposits.
- From 1902 to 1991 the property has seen 7 past producing mines with historical production of over 120,000 ounces
- Gold mineralization is controlled by 3 regional structures: Jubilee, Grace-Darwin and the Parkhill Shear.

Augustine Ventures Inc.

Historical Gold Mining on the Citadel Property:

Mine/Deposit Owned by Delta	Years of Operation	Tons Milled	Gold Recovered (oz)	Grade (g/tonne)	Grade (oz/tonne)
Cooper	1938	4,489	1,626	11.24	0.333
Minto	1930-1934	63,201	21,267	12.55	0.366
Jubilee	1929-1939*	118,972	14,915	4.29	0.125
Surluga	1968-1991*	94,889	8,630	3.12	0.091
Parkhill	1929-1938*	125,769	54,307	14.81	0.432
Grace-Darwin	1902-1937*	45,528	17,635	13.27	0.185
Van Sickle	1935-1936	9,228	1,712	6.34	0.185
Mariposa	1904	9	19	72.99	2.129
Total		462,485	120,109	7.88	0.26

*intermittent production

Prodigy Gold Inc.

- Magino Gold property located in Finan township which consisted of an underground mine 1988 to 1992 producing 105,543 ounces of Au at 0.137 oz/ton.
- The property is situated in the Goudreau-Lochalsh district with gold mineralization hosted by the Webb Lake Stock.
- Gold concentrated in low-grade, quartz-sericite-pyrite mineralization
- The company has completed an NI 43-101 resource estimate
- Indicated 2,176,000 ounces at 1.00g/t Au
- Inferred 1,721,000 ounces at 0.99 g/t Au
- Conducting a 60 000 m diamond drill program that will be included in the company's upcoming feasibility study.
- Recently the company has released a preliminary economic assessment which provides an update for future project timelines.

Strike Minerals Inc.

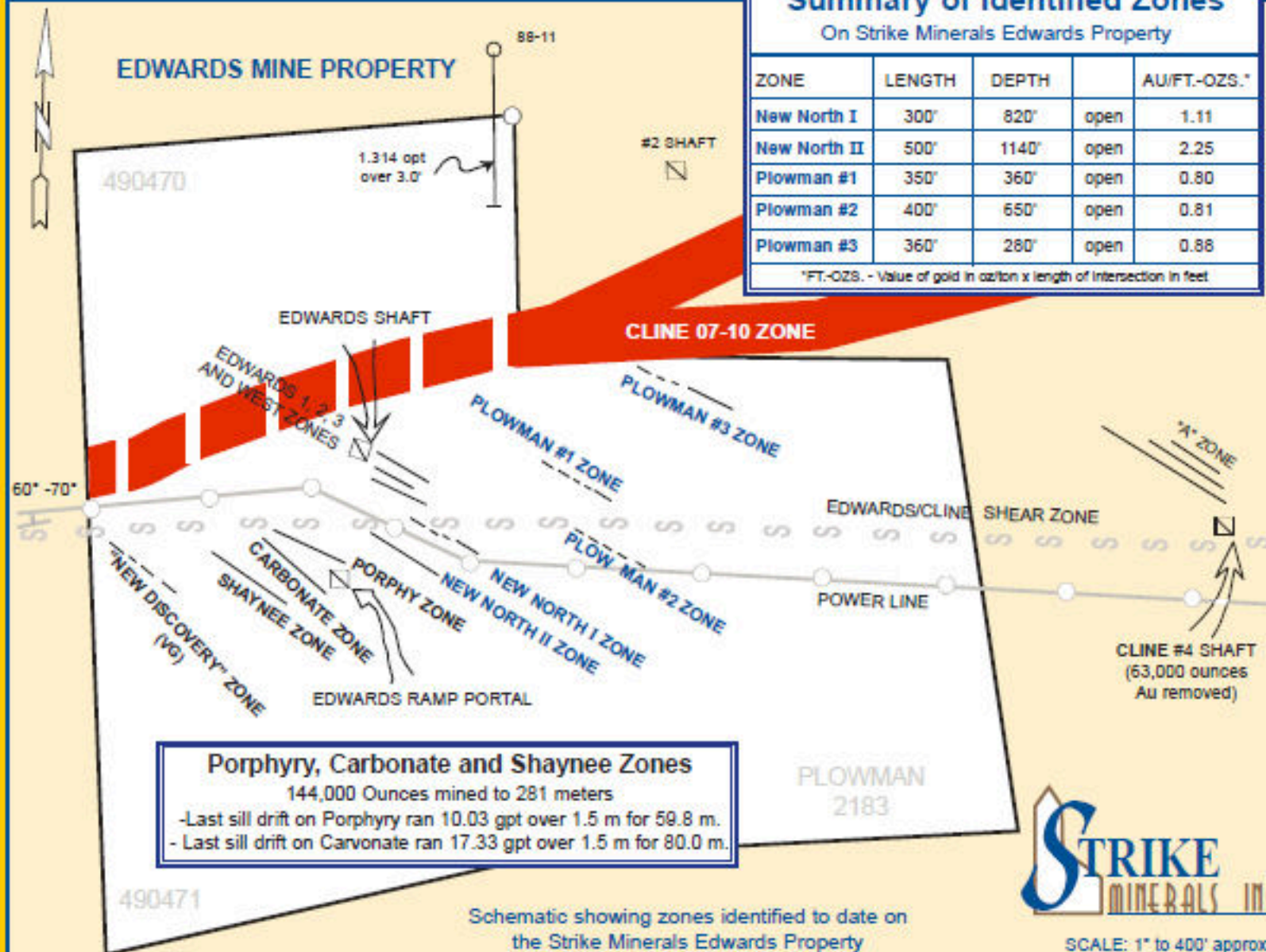
- Edwards Gold Mine is located in Jacobson Twp within the Goudreau-Lochalsh Deformation Zone
- The property was mined by River Gold Mines from 1996 to 2001 and recovered 144,000 ounce Au at 0.39 oz/ton.
- The property lies within the Edwards/Cline Shear zone with gold mineralization hosted in quartz vein type deposits.
- Has completed a series of drill holes to test a series of zones at depth including a porphyry and carbonate zone.
- The company has started underground development testing zones at the 60m and 90m level and then drift onto the historical Edwards Zones.
- The drifting will cut these zones and allow the company to examine high grade gold values obtained from historic drilling

Summary of Identified Zones

On Strike Minerals Edwards Property

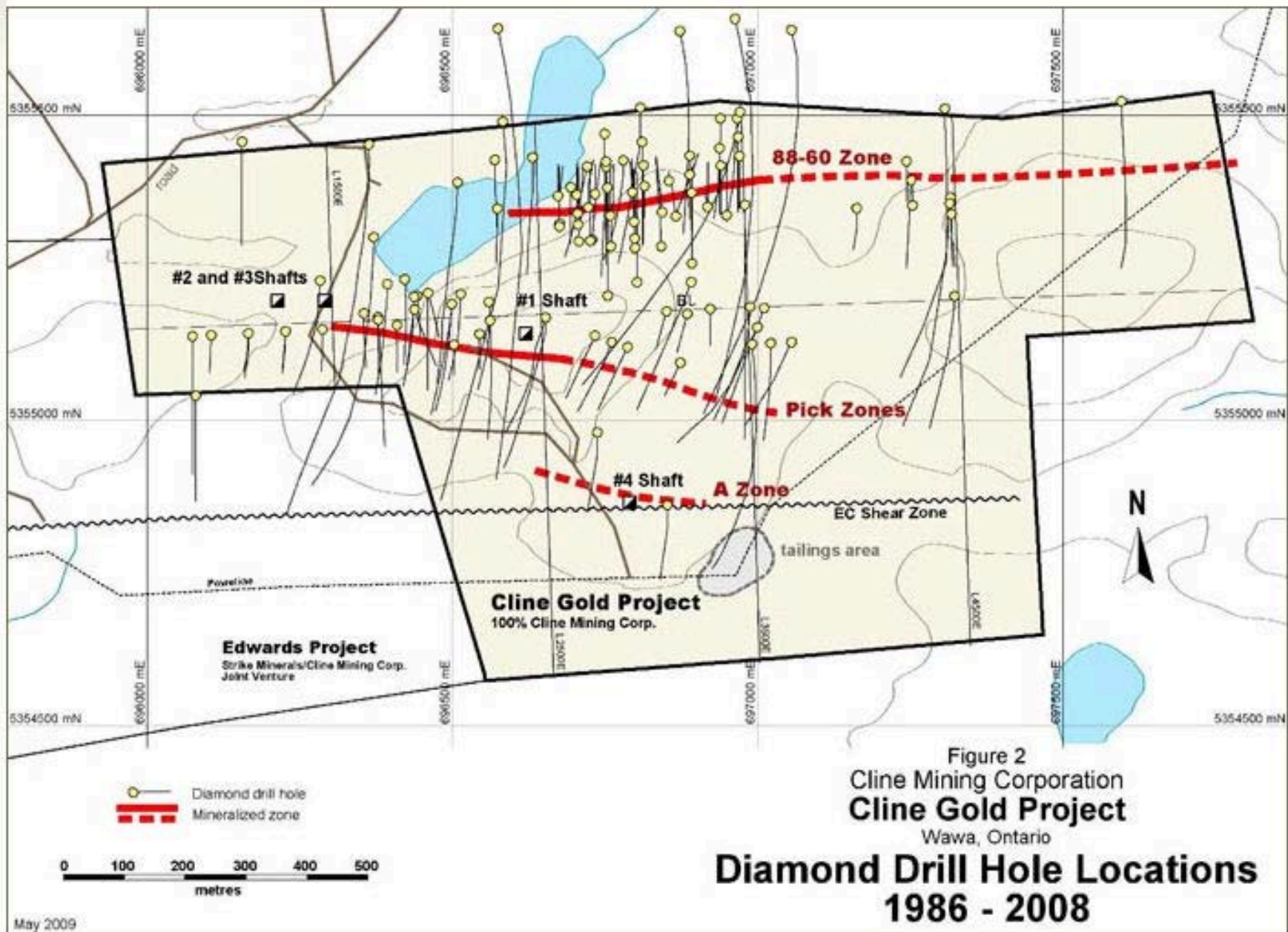
ZONE	LENGTH	DEPTH		AU/FT.-OZS.*
New North I	300'	820'	open	1.11
New North II	500'	1140'	open	2.25
Plowman #1	350'	360'	open	0.80
Plowman #2	400'	650'	open	0.81
Plowman #3	360'	280'	open	0.88

*FT.-OZS. - Value of gold in oz/ton x length of intersection in feet



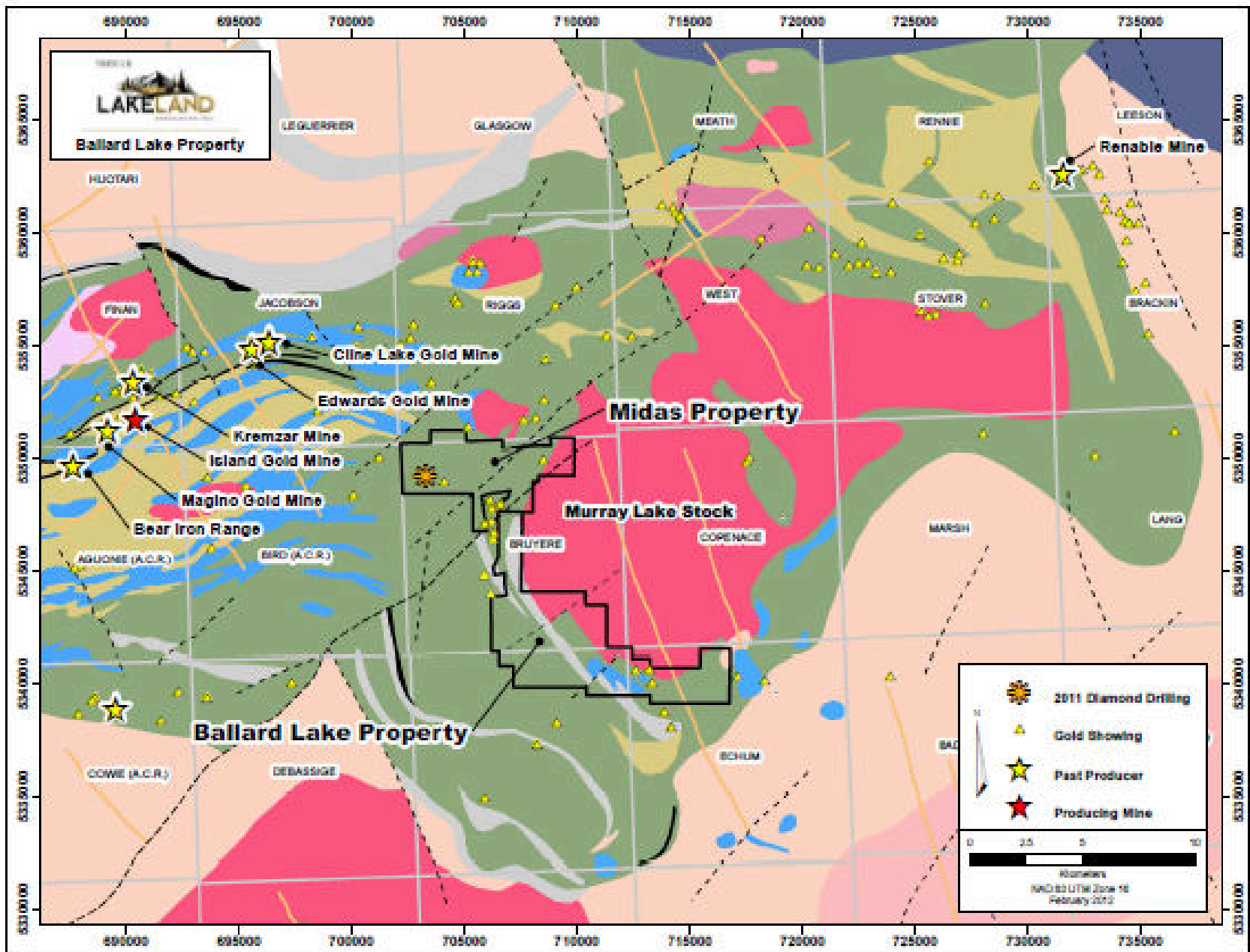
Cline Mining Corporation

- Located in Jacobson twp in the Goudreau-Lochalsh district.
- The company was able to identify 7 new gold zone and areas of potential for future exploration work.
- The property lies within the Edwards/Cline shear where gold mineralization is hosted in quartz-sulphide veining.
- The company has completed an extensive drill program on the property and the results were incorporated in a NI 43-101 report.
- A total of 4 shafts were sunk on the property in the 1930's with 332,670 tons recovered at 0.215 oz/ton Au from surface to the 500 foot level.



Lakeland Resources Inc.

- Property is located in Bruyere twp within the Goudreau-Lochalsh District
- Properties include the Midas Property and the Ballard Lake Property
- The company has identified 2 zones named the M-11 and M-16 zones.
- These zones were followed up with 2 diamond drill programs testing the strike and depth potential.
- The gold mineralization has been interpreted as being structurally controlled:
- M-16 Zone: hosted in altered iron formation cut by quartz-pyrite veins
- M-11 Zone: mineralization consists of quartz-carbonate pyrite altered mafic metavolcanic rocks.



Other Exploration Projects

- **Conquest Resources Ltd.-Smith Lake Project**
- **Giyani Gold Corp.-Abbie Lake-Keating Property**
- **Dianor Resources Inc.-Leadbetter Diamond Project**

Producing Gold Mines in the Wawa Area



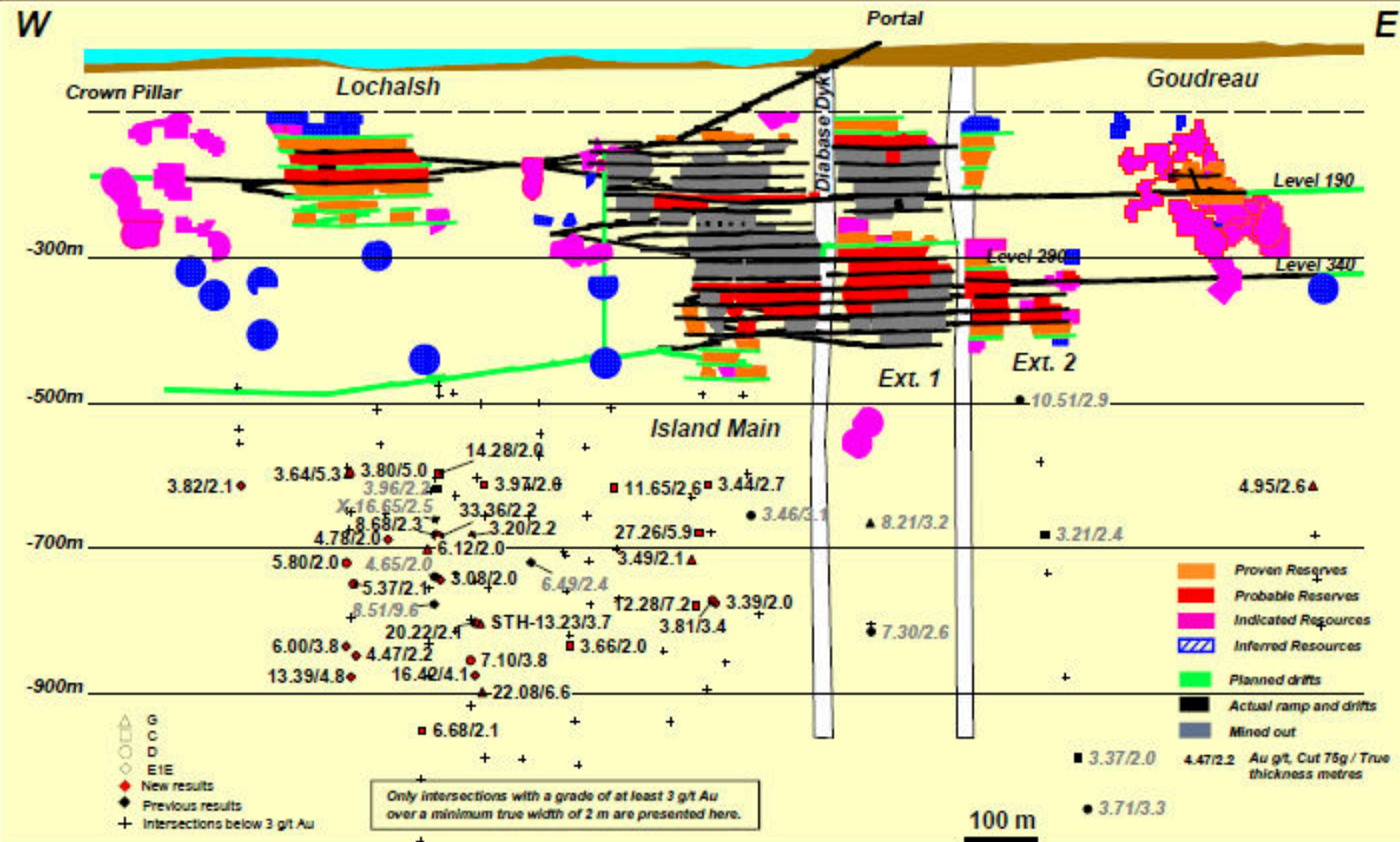
Richmont Mines

- **Island Gold Mine**
 - Located in the Gourdreau-Lochlash District
 - In the 12 months 2011 produced 49,196 ounces at 5.85 g/t Au
 - In the 12 months Proven and Probable reserves were 171,814 gold ounces which was attributed by the drilling completed in 2011.
- The company has completed 23,000 m of deep drilling and are planning 35,000m of deep drilling for 2012 in order to establish resources below the current infrastructure.
- The company has also begun a 1,100 m drift from the 400m level and evaluating their options for a potential exploration shaft.

ISLAND GOLD MINE

LONGITUDINAL SECTION – DEEP DRILLING RESULTS

RICHMONT



Wesdome Gold Mines Ltd.

- **Eagle River Mine**
 - Located in the Mishibishu Greenstone Belt
 - 2011 produced 28,200 ounces at 14.3 g/t Au.
 - 2012 forecasted to produce 28, 000 ounces Au.
 - Reserves currently 167,000 ounces gold.
- Mineralized zones are identified along a 16km strike length where zones are hosted shears which cut a quartz diorite stock and some zones are hosted in sheared mafic volcanics east of the stock.
- The company has been focusing their efforts at the 811 zone west of the property which has been traced down to the 1000m level.

Eagle River 2011 Exploration Targets



Wesdome Gold Mines Ltd.

- **Mishi Pit**
 - Located 2km from the Eagle River Mill within the Mishibishu Greenstone Belt.
 - Measured and indicated reserves of 438,000 oz at 2.4 g/t Au
 - Permitting and feasibility study completed
 - 5 year mine plan
- 2004 Wesdome tried to reactivate the Magnacon Deposit.
- This development involved an 800 m drift from the Magnacon to the Mishi pit
- Improving economic conditions a re-evaluation of the Mishi deposit took place with a NI 43-101 and a feasibility study was completed for an open-pit mining operation that will feed the existing Eagle River Mill.
- The company is forecasting to produce 9000 ounces of Au in 2012.



Project Planning

- Project Proposals are due by October 31st of each year.
- Currently in the process of developing a multi-year mapping project in the Eastern section of the Goudreau-Lochalsh District
- Focus will be on Townships that have not been mapped by the provincial Survey.



Thank You

